

Mercury Medical[®]

Your Need ... Our Innovation[®]

ONLY ONE

NEW & IMPROVED



Face-Cradle[®]
Prone Support System



- Simple set-up, "no waiting"
- Fully adjustable cushion set accommodates most adult head sizes and pediatric patients that are at least 37.19 kg (82 lbs.) or more
- Greater patient stability
- Greater visibility of patient's eyes & ET tube
- Mirror made from durable polycarbonate material
- MR Conditional
- Latex-Free

**"When vision matters...
...you have control"**



Fully Adjustable

The Face-Cradle is for use in prone position procedures offering the clinician **greater visibility** of the patient's face.

11300 - 49th Street North • Clearwater, Florida 33762-4807 USA

Tel. (800) 835.6633 • (727) 573.0088 • Fax (800) 990.6375

www.mercurymed.com

Since 1963

over ▶

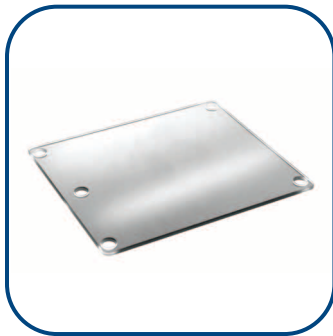
ONLY ONE

NEW & IMPROVED



Face-Cradle®
Prone Support System

The Face-Cradle System consists of a mirror, a base and a soft, contoured foam set.



Mirror



Base



Foam Set

Specifications:

Mirror Weight	488 grams	Mirror Material	Polycarbonate
Base Weight	785 grams	Base Material	Polycarbonate
Foam Set Weight	242 grams	Foam Set Material	Polyurethane
		Base Hardware Material	Stainless Steel
Adjustment Range, Height	26.4 mm - approx. 1"		
Adjustment Range, Horizontal	40.0 mm - approx. 1.5"		

Ordering Information:

10-520-01	Prone Mirror
10-520-02	Prone Base
10-520-03	Prone Contoured Foam Cushions (2/set, 5 sets per box)

Accessories

Catheter Mounts

DM-3512000

Flexible Catheter Mounts

DM-3511000

Description

Superset straight catheter mounts

Flexible straight catheter mounts

Packaged

50/Box

50/Box

US Patent # 8,549,683 B2; D 690,016 S

