

Gauges

Cylinder Contents 0 - 3000 PSI Minimum Bottom Mount



#69-20000
#69-20001
#69-20002
#69-20003
#69-20004
#69-20050
#69-20051

Oxygen contents - 1-1/2" dial - 1/8" NPT
Oxygen contents - 2" dial - 1/4" NPT
All gases contents - 2" dial - 1/4" NPT (non-hazardous gases)
All gases contents - 1-1/2" dial - 1/8" NPT (non-hazardous gases)
Nitrous Oxide contents - 2" dial - 1/4" NPT - Blue Face
Oxygen contents - 2" dial - 1/8" NPT
All gases contents - 2" dial - 1/8" NPT

Back Mount



#69-20012

Oxygen contents - 1-1/2" dial - 1/8" NPT, male thread

Back Mount Slim Line



#69-20058

Oxygen contents - 1-1/2" dial - 1/8" NPT male thread
(Looks similar to many fire extinguisher gauges)

Back Mount Slim Line with Protective Boot



#69-20049

Oxygen contents - 1-1/2" dial - 1/8" NPT male thread. Supplied with protective boot.

Gauges For Mada® & Erie® Regulators



#69-20042
#69-20043

Oxygen, 1-1/2" Diameter, 4,000 PSI, 1/8" NPT Male Bottom Port
Oxygen, 1-1/2" Diameter, 4,000 PSI, 1/8" NPT Male Back Port



Front

#69-20059

Oxygen contents tank gauge with low pressure alarm when tank pressure falls below 500 PSI Audible & Visual Indicators. Gauge size 2". 1/8" NPT male bottom port.

NEW



#69-20060

Oxygen contents tank gauge with low pressure alarm when tank pressure falls below 500 PSI. Audible and visual indicators. 1/4" NPT male bottom port. Gauge size 2".

#69-20061

Nitrogen contents tank gauge with low pressure alarm when tank pressure falls below 500 PSI. Audible and visual indicators. 1/4" NPT male bottom port. Gauge size 2".

Gauges

LITER FLOW - BOTTOM MOUNT

(Always inspect orifice for correct size and verify gas delivery for accuracy upon completion of gauge replacement)



1/32 to 1/2 Liter Gauges

#69-20026 Oxygen flow - special orifice - 2" dial - 1/4" NPT



0-1 Liter Gauges

#69-20047 Oxygen Flow - 2" dial - 1/4" NPT



0-5 Liter Gauges

#69-20023 Oxygen flow - .26mm orifice - 2" dial - 1/4" NPT

#69-20030 Oxygen flow - .26mm orifice - 1-1/2" dial - 1/8" NPT

#69-20052 Oxygen flow - 2" dial - 1/8" NPT



Replacement Gauges for MADA® & ERIE® Regulators

#69-20036 Oxygen flow - #77 orifice 1-1/2" dial - 1/8" NPT



0-8 Liter Gauges

#69-20021 Oxygen flow - #80 orifice - 1-1/2" dial - 1/8" NPT

#69-20022 Oxygen flow - #80 orifice - 2" dial - 1/4" NPT

#69-20053 Oxygen flow - 2" dial - 1/8" NPT



Replacement Gauges for MADA® & ERIE® Regulators

#69-20038 Oxygen flow - #R orifice 1-1/2" dial - 1/8" NPT



0-15 Liter Gauges

#69-20005 Oxygen flow - #77 orifice - 1-1/2" dial - 1/8" NPT

#69-20006 Oxygen flow - #77 orifice - 2" dial - 1/4" NPT

#69-20054 Oxygen flow - #77 orifice - 2" dial - 1/8" NPT

#69-20034 Oxygen flow - #73 orifice, 1-1/2" dial, 1/8" NPT



Replacement Gauges for MADA® & ERIE® Regulators

#69-20040 Oxygen flow - #K orifice - 1-1/2" dial - 1/8" NPT

Gauges



#41-1101078P
 Manometer - 20cmH₂O to + 80cmH₂O
 Replacement for Drager Absorber System and Bain circuit modules.
 Rear inlet 1/4-18 NPT male thread.



#41-1101078L
 Replacement lens and bezel for the above.



#02-1400-8009-000
 Manometer - 20cmH₂O to + 100cmH₂O
 Replacement for Datex-Ohmeda GMS Absorber with 45° quick connect fitting. MRI compatible. Black casing.

#02-1400-8015-000
 Same as above, but with straight quick connect fitting.



#41-4105853A
 Manometer - 20cmH₂O to 80cm H₂O
 with 45° elbow (not shown) for Drager Absorber system.

REPLACEMENT LEXAN® GAUGE COVERS



#69-20741 Lens - for 1-1/2" gauge - snap on or screw type
 #69-20742 Lens - for 2" gauge - snap on or screw type
 #69-20743 Lens - for 1-1/2" gauge - snap in type for black case gauges
 #69-21464 Lens - for 1-1/2" gauge snap in type for chrome case gauges

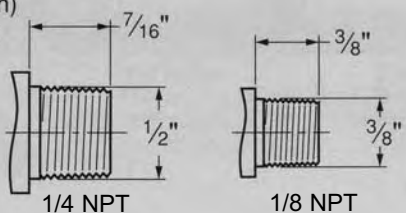
Helpful Hint ...

Still not sure which gauge? If the face of the gauge measures from 2" to 2-1/2" the thread fitting is usually 1/4" NPT male. If the face of the gauge measures from 1" to 1-1/2", the thread fitting is usually 1/8" NPT male.

*Typically thread hint does not apply.

Thread Comparisons:

(Actual Size shown)
 Compare your old fittings to the threads to determine the NPT size you need.
 (Measurements given are approximate.)



Thread Comparisons:
 Compare your old fittings to the threads to determine the NPT size you need.
 (Measurements given are approximate.)

Back Mount



Vacuum Gauges
#69-20028

Vacuum Contents - 1 1/2" Dial - 0-30 in. Hg - 1/8" NPT back mount



#69-20025
#69-20027
#69-20013

Pressure Gauges

Pressure 0-60 PSI-1 1/2" dial - 1/8" NPT (Non Hazardous gases)
Pressure 0-100 PSI - 1 1/2" dial - 1/8" NPT (Non Hazardous gases)
Nitrogen (0-300 PSI) 1 1/2" dial - 1/8" NPT (typically used on regulators powered by Nitrogen for power tools)



#06-616155

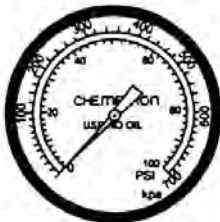
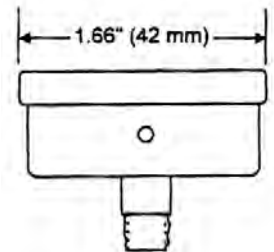
Adapter-Polysulfone (Plastic)

*Do not autoclave, gas-vacuum sterilize only.

AIRWAY PRESSURE GAUGE*

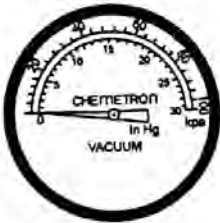
REPLACEMENT PARTS #06-130089

Zone Valve Gauges



#32-77-90-0571

0-100 PSI-1 1/2" dial - 1/8" NPT male-back mount for use with oxygen, nitrous oxide, and medical air



#32-77-90-0572

0-30" Hg-1 1/2" dial - 1/8" NPT male back mount for use with vacuum



#32-77-90-0573

0-300 PSI - 1 1/2" dial - 1/8" NPT male - back mount for use with nitrogen

Gauges/Bird Type



#09-0145R Manometer - 10cm H₂O to + 80cm H₂O for Mark series, with mounting bracket, 6" - 1/8" ID tubing with orifice and two bracelet hose clamps. Rear inlet connection.

#69-20045 Replacement gauge only with mounting bracket.



#09-4407R Manometer - 10cm H₂O to + 120cm H₂O for Bird Mark ventilator and Mark 14 with mounting bracket tubing with orifice and two bracket hose clamps. Rear inlet connection.

#69-20046 Replacement gauge only with mounting bracket.



#09-9799 Manometer - 20cm H₂O to + 140cm H₂O for Bird 6400ST, 8400ST and VIP ventilator. 1/8"Rear inlet tubing connection.



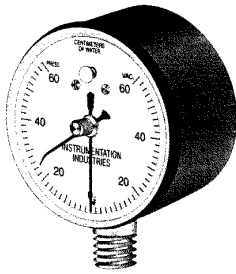
#09-2631 Manometer -40cm H₂O to + 40cm H₂O Large 2-7/8" diameter dial with 3/8" bottom tubing connection.

#09-2632 Same as above with 3' tubing.

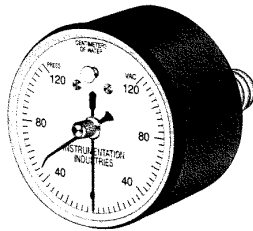


#09-0145A Replacement lens and bezel for 69-20046, 09-0145R, 69-20045, 09-4407R and 09-0902R Gauges.

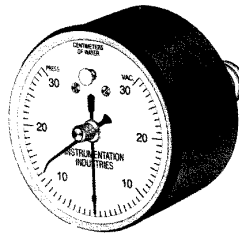
Gauges/Inspiratory Force



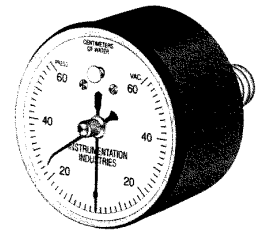
#GZ-NS60-TBR
Negative Inspiratory Force Monitor includes adapter #GZ-BE149-1 and recording needle reads $\pm 60\text{cm H}_2\text{O}$ in 2cm dial markings with 1/4" NPT connection on bottom.



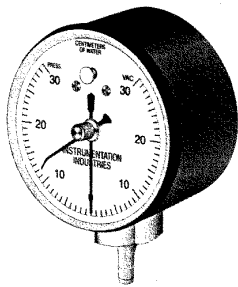
#GZ-NS120-TRR
Negative Inspiratory Force Monitor includes adapter #GZ-BE149-1 and recording needle reads $\pm 120\text{cm H}_2\text{O}$ in 4cm dial markings with 1/4" NPT connection in rear.



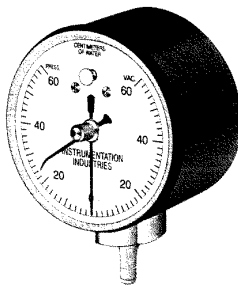
#GZ-NS30-TRR
Negative Inspiratory Force Monitor includes adapter #GZ-BE149-1 and recording needle reads $\pm 30\text{cm H}_2\text{O}$ in 1cm dial markings with 1/4" NPT connection in rear.



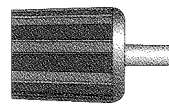
#GZ-NS60-TRR
Negative Inspiratory Force Monitor includes adapter #GZ-BE149-1 and recording needle reads $\pm 60\text{cm H}_2\text{O}$ in 2cm dial markings with 1/4" NPT connection in rear.



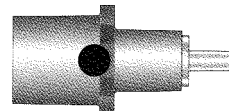
#GZ-NS30-PBR
Negative Inspiratory Force Monitor includes adapter #GZ-BE148-6 and recording needle reads $\pm 30\text{cm H}_2\text{O}$ in 1cm dial markings with 1/8" small bore tubing connection on bottom.



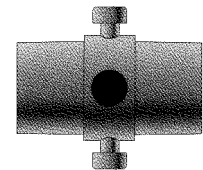
#GZ-NS60-PBR
Negative Inspiratory Force Monitor includes adapter #GZ-BE148-6 and recording needle reads $\pm 60\text{cm H}_2\text{O}$ in 2cm dial markings with 1/8" small bore tubing connection on bottom.



#GZ-BE1481



#GZ-BE1486



#GZ-BE1491

Gauge Adapters

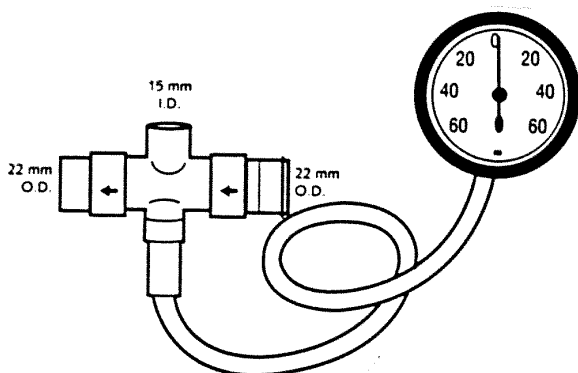
#GZ-BE1481
with 1/4" NPT and 1/8" small bore tube adapter. For easy spot check of line pressure on ventilator or other pressure breathing devices. Use with any 1/4" NPT pressure gauge.

#GZ-BE1486
with 1/8" tubing adapter and 22mm O.D./15mm I.D. end for remote inspiratory pressure monitoring.

#GZ-BE1491
with 22mm O.D./15mm I.D. and 1/4" NPT. Attach to #GZ-BE149 pressure gauge and endo tube, trach tube or mask for inspiratory pressure monitoring.

#58-395946

- Respiratory force measuring device
- 60-0-60mmHg gauge with tubing, T-piece and 2 one-way valves
- Neoprene valve flaps
- Single use



Replacement Parts:

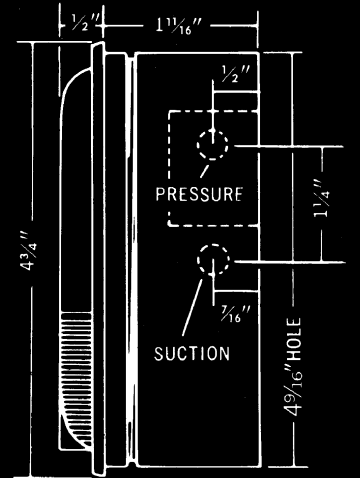
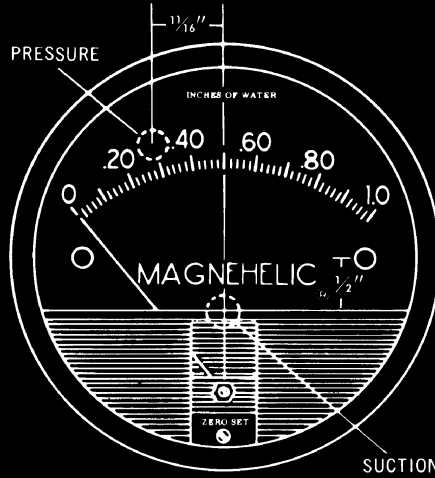
- #58-395940**
- Tube set for respiratory force measuring device #58-395946
 - Neoprene valve flaps
 - Single use

- #58-395943**
- Gauge only, 60-0-60mmHg
 - Single use

- #58-396072**
- Gauge only, positive pressure 0-25cm H₂O
 - Single use

Series Magnehelic® Differential Pressure Gauges 2000

Indicate low medical air or gas pressures-- positive, negative or differential. Accurate within 2%. 81 Ranges



Standard Magnehelic Pressure Gauge has large easy-to-read 4" dial.

Dimensions Standard Series 2000 Magnehelic® Pressure Gauges (Slightly different on medium and high pressure models)

Select the Dwyer Magnehelic® gauge for high accuracy - guaranteed within 2% of full scale - and for the wide choice of 81 ranges available to suit your needs precisely. Using Dwyer's simple, frictionless Magnehelic® movement, it quickly indicates low medical air or non-corrosive gas pressures - either positive, negative (vacuum) or differential. The design resists shock, vibration and over-pressures. No manometer fluid to evaporate, freeze or cause toxic or leveling problems. It's inexpensive, too.

Widely used to measure fan and blower pressures, filter resistance medical air velocity, furnace draft, pressure drop across orifice plates, liquid levels with bubbler systems and pressures in fluid amplifier or fluidic systems. It also checks gas-medical air ratio controls, and automatic valves, and monitors blood and respiratory pressures in medical care equipment.

Mounting. A single case size is used for most ranges of Magnehelic gauges. They can be flush or surface mounted with standard hardware supplied. With the optional FR-A-610 Pipe Mounting Kit they may be conveniently installed on horizontal or vertical 1-1/4" - 2" pipe. Although calibrated for vertical position many ranges above 1 inch may be used at any angle by simply re-zeroing. However, for maximum accuracy, they must be calibrated in the same position in which they are used. These characteristics make Magnehelic gauges ideal for both stationary and portable applications. A 4-9/16" hole is required for flush panel mounting. Complete mounting and connection fittings plus instructions are furnished with each instrument.



PHYSICAL DATA

Ambient temperature range: 20° to 140°F*

Rated total pressure - 20N Hg. to 15 psig.**

Over Pressure: Relief plug opens at approximately 25psig.

Connections: 1/8" NPT female high and low pressure taps duplicated - one pair side and one pair back.

Housing: Die cast aluminum case and bezel, with acrylic cover. Exterior finish is coated gray to withstand 168 hour salt spray corrosion test.

Accuracy: ±2% of full scale (3% on - O and 4% on - 00 ranges), throughout range at 70°F.

Standard Accessories: Two 1/8" NPT plugs or duplicate pressure taps, two 1/8" pipe thread to rubber tubing adapters, and three flush mounting adapters with screws. (Mounting ring and snap ring retainer substituted for 3 adapters in MP and HP gauge accessories.)

Weight: 1lb., 2 oz.

* Low temperature models available as a special option.

** For applications with high cycle rate within gauge total pressure rating next higher rating is recommended.

Model Number	Range CM of Water
#FR-2000-15CM	0-15
#FR-2000-20CM	0-20
#FR-2000-25CM	0-25
#FR-2000-50CM	0-50
#FR-2000-80CM	0-80
#FR-2000-100CM	0-100
#FR-2000-150CM	0-150
#FR-2000-200CM	0-200
#FR-2000-250CM	0-250
#FR-2000-300CM	0-300
Zero Center Ranges	
#FR-2300-4CM	2-0-2
#FR-2300-10CM	5-0-5
#FR-2300-30CM	15-0-15

**These ranges calibrated for total vertical scale position.

Gauge Mounts

Gauge Clamps

Helps prevent gauge breakage!

- Reusable
- Packaged: **Individually**
- Anodized Aluminum
- Small bore tubing connection

#GZ-BE 148-5-2.5 Gauge Clamp

- For equipment requiring 1" to 2-1/2" opening
- Mounts rear 1/4" NPT threaded gauges securely to poles, incubators, ventilators, etc.



#GZ-BE 148-5-3.5 Gauge Clamp

- For equipment requiring 2-1/2" to 3-1/2" opening
- Mounts rear 1/4" NPT threaded gauges securely to poles, incubators, ventilators, etc.



#GZ-RB 004 Gauge Rail Clamp

- Mounts rear 1/4" NPT threaded gauges securely to rails



#GZ-BE 148-5-2 Gauge Pole Clamp

- For poles from 3/4" to 1-1/2" diameter
- Mounts rear 1/4" NPT threaded gauges securely to poles



#GZ-BE 148-5-1 Gauge Pole Clamp

- For poles from 3/4" to 1-1/2" diameter
- Mounts rear 1/4" NPT threaded gauges securely to poles



NEW!

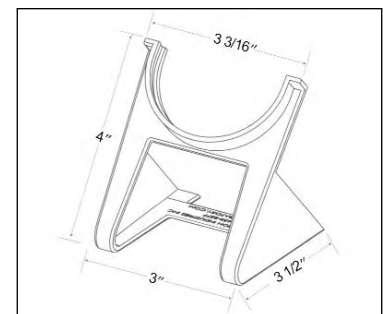
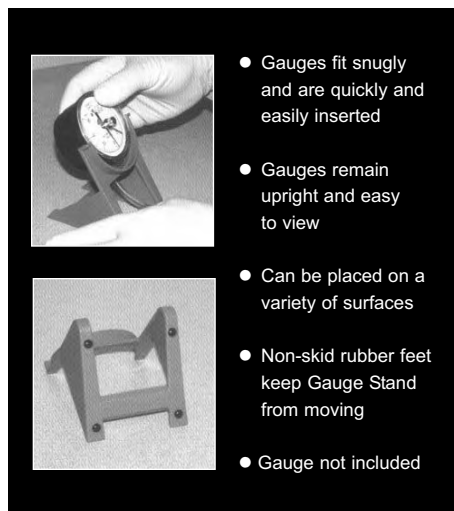
Gauge Covers

Unique clam shell design securely locks gauges in place. The ribbed design provides maximum shock protection. Designed to fit all of the **NS Series Vacuum/Pressure Gauges and NIF Monitors**.



#GZ-NS-GC

Gauge Covers assure you that **Vacuum/Pressure Gauges** and **NIF Monitors** will have the highest level of protection from falls, drops, vibrations, and other shocks.



Model #: #GZ-NS-GS Gauge Stand

Length: Top 3-1/16" — Bottom 3"

Height: 4"

Depth: 3-1/2"

Weight: 29.9g (without gauge)

Material: Polypropylene

Other: Non-skid rubber feet

Fits: Instrumentation Industries, Inc.

NS Series -PBR, -PBS, -TRR, & -TRS
Gauges and Monitors

Gauges/Nitrogen/Miscellaneous



#69-20020

Nitrogen Gauges

Nitrogen Bottom Mount (0-300PSI) 1-1/2" dial - 1/8" NPT



#69-20007
#69-20008
#69-20009
#69-20010
#69-20032

0-100 PSI Gauges

Oxygen - 1-1/2" dial - 1/8" NPT - Green Face

Oxygen - 2" dial - 1/4" NPT - Green Face

All gases - 2" dial - 1/4" NPT - White Face (non-hazardous gases)

Nitrous Oxide - 2" dial - 1/4" NPT - Blue Face

All gases - 1-1/2" dial - 1/8" NPT - White Face (non-hazardous gases)

#69-20055
#69-20056

Oxygen - 2" dial - 1/8" NPT

All Gases - 2" dial - 1/8" NPT (Non-Hazardous Gases) Plastic Case



Miscellaneous Gauges (Bottom Mount - White Face) (non-hazardous gases)

#69-20033
#69-20014
#69-20015
#69-20016
#69-20017
#69-20018
#69-20019

All gases pressure gauge - 2" dial - 0-15 PSI - 1/4" NPT

All gases pressure gauge - 2" dial - 0-30 PSI - 1/4" NPT

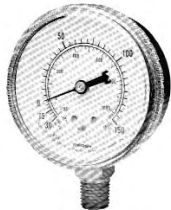
All gases pressure gauge - 2" dial - 0-60 PSI - 1/4" NPT

All gases pressure gauge - 2" dial - 0-200 PSI - 1/4" NPT

All gases pressure gauge - 2" dial - 0-400 PSI - 1/4" NPT

All gases pressure gauge - 2" dial - 0-600 PSI - 1/4" NPT

All gases pressure gauge - 2" dial - 0-1000 PSI - 1/4" NPT



#25-0550-0223

Dual Range Gauges

Pressure/Vacuum - 0-200 PSI and 0-30" Hg Vacuum 2" Dial 1/4" NPT

Bottom Mount (Note: 150PSI ILLUSTRATED)



#69-20035

Vacuum Gauges

Vacuum contents - 2" dial, 0-30 in. Hg - 1/4" NPT bottom mount, black casing



#57-3-101
#57-3-102

Replacement Suction Gauges for W.T. Farley® DU-O-VAC and OEM Medical (C.I.G.) Twin-O-VAC

0-600mmHg Suction Gauge, Bottom Mount 1/4 NPT Male

0-200mmHg Suction Gauge, Bottom Mount 1/4 NPT Male

LITER FLOW - BACK MOUNT

Item Not
Shown

0 to 1/2 Liter Gauges

#69-20057 Oxygen Flow - 1-1/2" dial - 1/8" NPT

Item Not
Shown

0 to 1 Liter Gauges

#69-20048 Oxygen flow - 1-1/2" dial - 1/8" NPT



0 to 5 Liter Gauges

#69-20029 Oxygen flow 1-1/2" dial - .26mm orifice - 1/8" NPT



Replacement Gauges For MADA® & ERIE® Regulators

#69-20037 Oxygen flow 1-1/2" dial - 1/8" NPT (0 - 5 LPM)



0-8 Liter Gauges

#69-20024 Oxygen flow - 1-1/2" dial - #80 orifice - 1/8" NPT



Replacement Gauges For MADA® & ERIE® Regulators

(0 - 8 LPM)

#69-20039 Oxygen flow - 1-1/2" dial - #R Orifice - 1/8" NPT



0-15 Liter Gauges





#69-20011 Oxygen flow - 1-1/2" dial - #77 orifice - 1/8" NPT



Replacement Gauges For MADA® & ERIE® Regulators

(0 - 15 LPM)

#69-20041 Oxygen flow - 1-1/2" dial - #K orifice - 1/8" NPT

LITER RANGE ORIFICE SIZE	 STRAIGHT D.I.S.S. x 1/8	 STRAIGHT D.I.S.S. x 1/4	 3/16" 90° BARB x NPT		 3/16" STRAIGHT BARB x 1/8
1/2 LPM		#69-21008	1/8 NPT	1/4 NPT	
1LPM		#69-21010			
5LPM - .26MM	#69-21017	#69-21007	#69-21013	#69-21009	#69-21011
8LPM - #80	#69-21002	#69-21005	#69-21014	#69-21016	#69-21012
15LPM - #77	#69-21001	#69-21004	#69-21015		#69-21006
15LPM - #73		#69-21003			

Gauges/Patient Pressure



#GZ-NS30-TRS
Gauge reads $\pm 30\text{cm H}_2\text{O}$
in 1cm dial markings with 1/4" NPT connection in rear.



#GZ-NS60-TRS
Gauge reads $\pm 60\text{cm H}_2\text{O}$
in 2cm dial markings with 1/4" NPT connection in rear.



#GZ-NS120-TRS
Gauge reads $\pm 120\text{cm H}_2\text{O}$
in 4cm dial markings with 1/4" NPT connection in rear.



#GZ-NS60-PBS
Gauge reads $\pm 60\text{cm H}_2\text{O}$
in 2cm dial markings with 1/8" small bore tubing connection on bottom..



#GZ-NS30-PBS
Gauge reads $\pm 30\text{cm H}_2\text{O}$
in 1cm dial markings with 1/8" small bore tubing connection on bottom.



#GZ-NS60-TBS
Gauge reads $\pm 60\text{cm H}_2\text{O}$
in 2cm dial markings with 1/4" NPT connection on bottom.

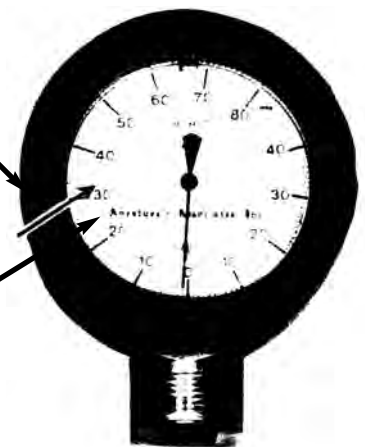


CUFF PRESSURE GAUGE

- #04-660001 Cuff Pressure Gauge
- #04-660565 Cuff Pressure Gauge tubing

#19-00-150
Gauge Guard (only)
to fit #19-00-199

#19-00-199
Manometer



Manometer has range of -40 to $+80\text{cm H}_2\text{O}$ in a 2-1/2" diameter chrome-plated case with 1/4 male NPT bottom connection. Has front zero correcting screw.

Gauges/Protectors

#BJ-2800 The Gage-Gard™ was designed to help eliminate accidental damage to manometers. The Gage-Gard is supplied with a Velcro type of fastener for temporary or permanent mounting to any smooth Surface.

Model #BJ-2800 Most 2-1/2" BOTTOM port pressure manometers, OEM, DHD, Portex, Instrumentation Industries, Anesthesia Associates and many others.

Model #BJ-2800MM Includes OEM 395943 Respiratory Force Gauge and BJ-2800 Gage-Gard.



#BJ-2800



#BJ-2915
Fits 2" control knobs.
Victor "newer" VMG Series,
Chemetron and more.



#BJ-2801

#BJ-2801 Gage-Gard
Most 2-1/2" Back port pressure
manometers, Bird, Monaghan, Puritan-
Bennett and many others.

#34-G-15A-PCE
Gauge Saver designed for 1-1/2"
back port Slim-line Gauges.



#BJ-3000 Bo-Re-Gard

#BJ-3000

The Bo-Re-Gard
was designed for all
Boehringer
Spirometers. A
lanyard is also
included.

#BJ-2909
Fits all 2" BOTTOM
port gauges.



#BJ-2909



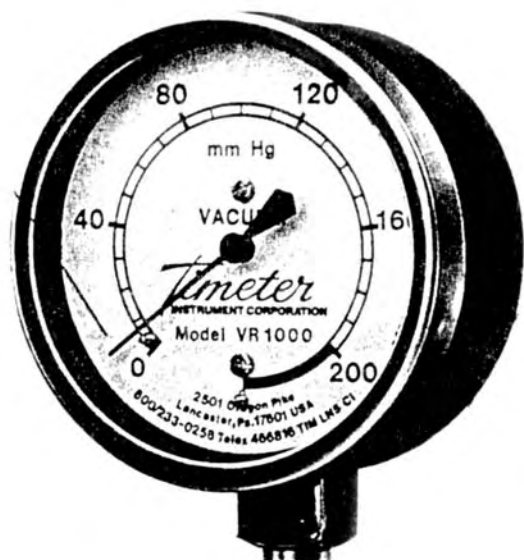
#BJ-2703

The #BJ-2703 carrying case was specifically designed Extra Large for the purpose of holding respirometers with Spiro-Guards on them. The plastic case does NOT have a zipper and is lightweight and durable.

(Respirometer, Spiro-Guard and adapters not included.)

9" x 5" with carrying case.

Gauges/suction

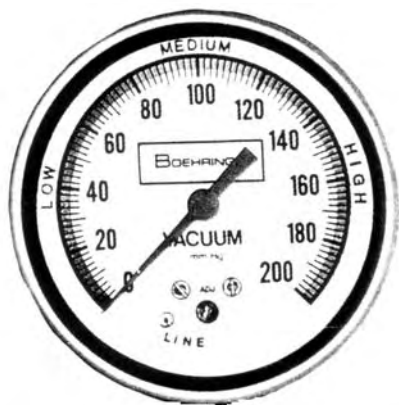


#AW-915407
0-200mmHg Vacuum gauge
1/8-27 NPT Male Bottom Mount for Timeter Model
VR1000 Suction Regulator
(Note: Does **NOT** include Swivel assembly)

#21-598-D
0-200mmHg Vacuum gauge
1/4-18 NPT Male Bottom Mount for Oxequip Surgical Model
Quadra-VAC Suction Regulator with HI-VAC (Full) range



#21-598-B
0-200mmHg Vacuum gauge
1/4-18 NPT Male Bottom Mount
for Oxequip Standard and Pediatric
QUADRA-VAC Suction Regulator



#BB-9071
0-200mmHg Vacuum gauge
1/8-27 NPT Male Bottom Mount
for Boehringer Labs Model 7700 Suction Regulator

Gauges/suction

#02-6700-0050-200

0-200 mmHg with full line range Vacuum gauge for Ohmeda standard two-mode continuous, standard three mode continuous, standard surgical/ free flow, posi-pulse and intermittent suction unit (ISU).
Includes Lens



#02-6700-0050-201

0-760 mmHg Vacuum gauge for Ohmeda High continuous and High surgical free-flow suction regulator. Includes lens.

#02-6700-0050-202

0-180 mmHg Vacuum gauge for Ohmeda Low continuous suction regulator. Includes lens



#02-6700-0430-850

0-65 cmH₂O Vacuum gauge for Ohmeda Thoracic suction regulator supplied without lens.



#02-6700-0087-500

Replacement lens all Ohmeda suction regulators

Gauges/suction

#34-MG-B76

0-200 mmHg Vacuum gauge 2 1/2" Diameter
1/8-27 NPT male bottom mount for Western and Union
Carbide Suction regulator



#34-MG-71

0-200 mmHg + Full Vacuum Gauge (style may vary)

1/8" - 27 NPT Male Bottom Mount, 2-1/2" Diameter
for Western, Union Carbide Suction Regulator



#06-130096-PG

0 - 200 mmHg Vacuum Gauge
1/4" - 18 NPT Male Bottom Mount,
for Nellcor Puritan-Bennett Suction Regulator
and Interrupter

#06-130097-PG

0 - 60cm H₂O Vacuum Gauge
1/4" - 18 NPT Male Back Mount
for Nellcor Puritan-Bennett Thoracic
Drainage Suction Regulator



Gauges/suction



#32-22-95-0017
0-300mmHg 2" Vacuum gauge for Chemetron Vacutron continuous, intermittent, combo, and Surgical Regulator.



#32-22-95-0041
0-150mmHg 2" Vacuum gauge for Chemetron Pediatric Model Vacutron Suction Regulator.



#32-22-95-2003
0-300mmHg 2" Vacuum gauge for Chemetron mini-Vacutron continuous, intermittent, surgical, and combo (intermittent/continuous) Suction Regulator.



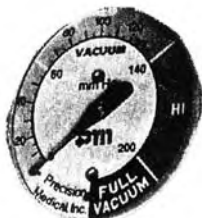
#32-22-95-2023
0 - 150 mmHg 2" Vacuum gauge for Chemetron mini-Vacutron Pediatric continuous and Pediatric continuous/intermittent Suction Regulator.



#32-22-95-2033
0-100mmHg 2" Vacuum gauge for Chemetron mini-Vacutron Low Vacuum Regulator.



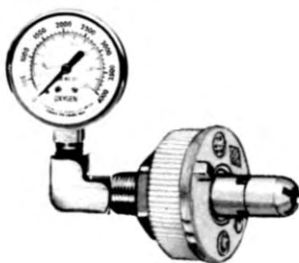
#32-22-95-2013
0-760mmHg 2" Vacuum gauge for Chemetron mini-Vacutron High Vacuum Regulator.



#EC-1562
0-200mmHg, with full range vacuum gauge for Precision Medical (PM) Intermittent/Continuous Model Suction Regulator.

#EC-502269
0-150mmHg Vacuum gauge for Precision Medical (PM), Model #PM3400 Pediatric Suction Regulator. (Not Shown)

Gauges/Test



(Photo for reference only)
Pressure Range 0-100 psi
Vacuum Range 0-30 in Hg.



Liter Meter ranges from
2.5, 8, 15LPM

Flow Tester

#34-MT 100 1/4 - 2-1/2 LPM Range
#34-MT 200 1/2 - 8 LPM Range
#34-MT 300 2 - 15 LPM Range

WITH OHMEDA (OHIO) DIAMOND INLET ADAPTER

#69-219-00 Oxygen test gauge
#69-219-01 Nitrous oxide test gauge
#69-219-02 Medical air test gauge
#69-219-03 Vacuum test gauge

WITH CHEMETRON (NCG) INLET ADAPTER

#69-219-04 Oxygen test gauge
#69-219-05 Nitrous oxide test gauge
#69-219-06 Medical air test gauge
#69-219-07 Vacuum test gauge

WITH SCHRADER INLET ADAPTER

#69-219-08 Oxygen test gauge
#69-219-09 Nitrous oxide test gauge
#69-219-10 Medical air test gauge
#69-219-11 Vacuum test gauge

WITH PURITAN BENNETT INLET ADAPTER

#69-219-12 Oxygen test gauge
#69-219-13 Nitrous oxide test gauge
#69-219-14 Medical air test gauge
#69-219-15 Vacuum test gauge

WITH OXEQUIP (OES) TWIST INLET ADAPTER

#69-219-16 Oxygen test gauge
#69-219-17 Nitrous oxide test gauge
#69-219-18 Medical air test gauge
#69-219-19 Vacuum test gauge

WITH OXEQUIP MED*STAR INLET ADAPTER

#69-219-20 Oxygen test gauge
#69-219-21 Nitrous oxide test gauge
#69-219-22 Medical air test gauge
#69-219-23 Vacuum test gauge

WITH D.I.S.S. FEMALE INLET ADAPTER

#69-219-24 Oxygen test gauge
#69-212-25 Nitrous oxide test gauge
#69-219-26 Medical air test gauge
#69-219-27 Vacuum test gauge